

# Some examples of knowledge sharing in UK

Vicky Morgan

<http://jncc.defra.gov.uk/default.aspx?page=4332>



Search



**UK Biodiversity**

- [UK Biodiversity Indicators](#)
- [UK BRAG](#)
- [Priority Species pages](#)
- [2010 IYB](#)
- [2008 Reporting highlights](#)

**Protected Sites**

- [Common Standards Monitoring](#)
- [Ramsar](#)
- [Special Areas of Conservation](#)

**Habitats**

- [Habitats Classification](#)
- [UK Habitat Types](#)
- [Habitat issues](#)
- [How we work](#)
- [Habitats Publications](#)
- [Habitat Management search](#)

**Geoconservation**

- [Geological Conservation Review](#)

**Species**

- [Species Status Assessment](#)
- [Published Red Lists](#)
- [Conservation designations](#)
- [Plants](#)
- [Fungi](#)
- [Invertebrates](#)
- [Mammals](#)
- [Birds](#)
- [Common Standards Monitoring](#)
- [Biological Translocation](#)
- [Species protection](#)
- [Invasive non-native species](#)
- [Species Library](#)

**Status & Trends**

- [UK Nature Barometer](#)
- [Wildlife Statistics](#)
- [Conservation Status](#)

**Latest News**

[New threat to wildlife](#)  
A new book has been published  
highlighting the risks to European  
wildlife from nitrogen pollution.

[Download to your desktop](#)  
The new E-edition of JNCC's  
national and international  
conservation digest Nature News.

[more News](#)

**Key Questions?**

[What drives UK conservation?](#)  
[How is conservation delivered?](#)

**Related links**

[Habitats](#)



Search

- UK
  - ▶ UK Biodiversity
  - ▶ Habitats
    - ▶ Habitats Classification
    - ▶ UK Habitat Types
    - ▶ Habitat issues
      - How we work
      - Habitats Publications
      - **Habitat Management search**
  - ▶ Species
  - ▶ Protected Sites
  - ▶ Geoconservation
  - ▶ Status & Trends
  - ▶ UK Legislation

## Habitat Management search

grasslands  x  
powered by Google™

- Nature Management on the Web (version 2) [management\\_handbooks](#)
- [Lowland Grassland Management Handbook](#)

The second edition of the Lowland **Grassland** Management Handbook was published in 1999. It was a joint initiative between four major partners, The Wildlife ...  
[naturalengland.etraderstores.com](#)
- [Living Landscape Series - Grasslands - Foreword](#)

From open hillsides through grazed fields, hayfields and road verges down to playing fields and garden lawns, **grasslands** are everywhere. ...  
[www.snh.org.uk](#)
- [Lowland Calcareous Grassland - Buglife](#)

Lowland calcareous **grassland** supports a large number of scarce and highly local invertebrate species. A high proportion of these are species with ...  
[www.buglife.org.uk](#)
- [Living Landscape Series - Grasslands - Types of grassland](#)

## UK

### ► UK Biodiversity

### ► Habitats

- Habitats Classification
- UK Habitat Types
- Habitat issues
  - How we work
  - Habitats Publications

- **Habitat Management search**

### ► Species

### ► Protected Sites

### ► Geoconservation

### ► Status & Trends

### ► UK Legislation

## Habitat Management search

Google™ Benutzerdefinierte Suche

Suchen



powered by Google™

*Habitat Management on the Web* is a search engine designed for people who want to find out how best to manage habitats in the UK for biodiversity and conservation.

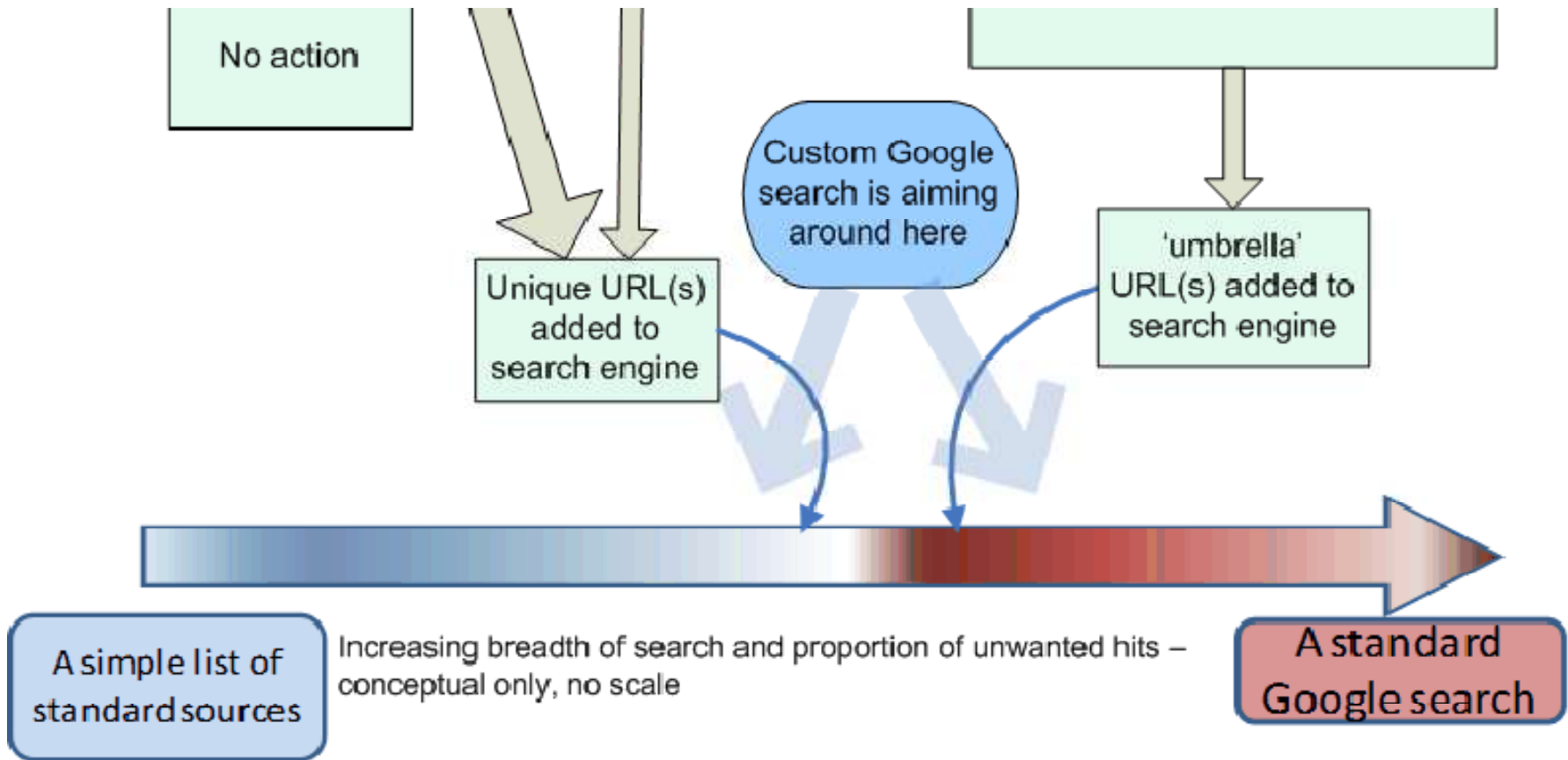
It is similar to a standard internet search, but it only searches web pages which have been pre-selected to take you to the most useful sources. It will not completely exclude irrelevant 'hits', but we hope it will guide you more quickly to the best management guidance. It only finds information which has been published on-line – papers and books are not covered.

For more information about the scope and contents of the engine, see [Chart 1: scope and progress of Habitat Management on the web Google custom search](#).

For information about how we identified sites for the engine to search, see [Chart 2: Finding, loading and testing URLs for Habitat Management on the web Google custom search](#)

For more technical information about how we refined the pages to search, see [Chart 3: outline process of selecting URLs for Habitat Management on the web Google custom search](#)

We continue to improve the search engine. It has been developed by JNCC with advice from habitat specialists in Countryside Council for Wales, Natural England, Northern Ireland Environment Service and Scottish Natural Heritage. The work is carried out under the direction of the Biodiversity Reporting and Information Group (BRIG) for the UK BAP Standing Committee."



## UK

### ► UK Biodiversity

### ► Habitats

- Habitats Classification
- UK Habitat Types
- Habitat issues
  - How we work
  - Habitats Publications
- **Habitat Management search**

### ► Species

### ► Protected Sites

### ► Geoconservation

### ► Status & Trends

### ► UK Legislation

## Habitat Management search

sand dunes

Suchen

powered by

Nature Management on the Web (version 2) management\_handbooks

### [Sand dune - Country Report, Ireland - Coastal Wiki](#)

Jan 13, 2009 ... This article on the **sand dunes** in Ireland, derives from the '**Sand Dune** Inventory of Europe' (Doody ed. 1991). ...

[www.coastalwiki.org](http://www.coastalwiki.org)

### [Buglife | Advice on managing BAP habitats | Coastal Sand Dunes](#)

**Sand dunes** develop on coasts which have consistent onshore winds and a sufficient supply of sand within the intertidal zone whose surface dries out between ...

[www.buglife.org.uk](http://www.buglife.org.uk)

### [European Sand Dune Distribution - Coastal Wiki](#)

Feb 28, 2011 ... **Sand dunes** border long stretches of the European coastline. They develop wherever there is a suitable supply of sediment moved onshore by ...

[www.coastalwiki.org](http://www.coastalwiki.org)

### [Impacts of Recreation On Coastal Sand Dunes And Machair](#)

The scale of activity necessary to cause significant damage or disturbance is related to local conditions and season, but **sand-dune** systems, salt marsh, ...

[www.snh.org.uk](http://www.snh.org.uk)

### [Sand dune types - Europe - Coastal Wiki](#)

May 19, 2009 ... **Sand dunes** develop on coastlines with an adequate supply of material within the size range 0.2-2.0mms. The critical factor is the ...

[www.coastalwiki.org](http://www.coastalwiki.org)

### [Dunes, beaches and the sea - A guide to managing coastal erosion ...](#)

2. **Dunes**, beaches and the sea. 2.1 Long-term evolution of **dunes** · 2.1.1 Sources of **sand** for **dunes** · 2.1.2 Losses of **sand** from **dunes** · 2.1.3 Consequences for ...

[www.conservationevidence.com](http://www.conservationevidence.com)



<http://data.nbn.org.uk/>

Datasets

**556**

Species records

**64,002,475**

Database last updated

**4th April 2011**



[YouTube Demo of single species mapping](#)



### Explore Datasets

[Browse Datasets](#)  
[Browse Dataset Providers](#)



### Explore Species

[Browse Species](#)



### Explore Sites

[Browse Sites](#)  
[Find Site on the Map](#)



### Explore Designations

[Browse Designations](#)

### Search by Location

Create a species list for a 10km square:

HL	HM	HN	HO	HP	JL	JM
HQ	HR	HS	HT	HU	JQ	JR
HV	HW	HX	HY	HZ	JV	JW
NA	NB	NC	ND	NE	OA	OB
NF	NG	NH	NJ	NK	OF	OG
NL	NM	NN	NO	NP	OL	OM
A	B	C	NR	NS	NT	NU
F	G	H	NX	NY	NZ	OV
L	M	N	O	SC	SD	SE
Q	R	S	T	SH	SJ	SK
V	W	X	Y	SM	SN	SO
					SP	TL
					SU	TM
					SR	SS
					ST	SU
					TQ	TR
					SV	SW
					SX	SY
					SZ	TV
					TW	

[Cumbria](#)  
[Cumbria Biodiversity Data Centre. Vertebrate Observation Records, other than Birds. Pre-2010 for Cumbria](#)

[Dorset Environmental Records Centre](#)  
[Dorset Sites of Nature Conservation Interest \(SNCI\) species records pre 2000](#)

[Merseyside BioBank](#)  
[North Merseyside Bat Recordsets](#)  
[North Merseyside Bird Recordsets](#)  
[North Merseyside General Recordsets](#)  
[North Merseyside Invertebrate Recordsets](#)  
[North Merseyside Marine Recordsets](#)  
[North Merseyside Mammal Recordsets](#)  
[North Merseyside Vascular Plant Recordsets](#)

[RSPB](#)  
[Bird Conservation Targeting Project \(BCTP\) in the UK archived data \(2001-2008\)](#)  
[Bird Conservation Targeting Project \(BCTP\) in the UK archived data \(2001-2008\) - sensitive records](#)  
[Black grouse lek survey in Lothian and Borders, 200 \(RSPB\)](#)  
[Black grouse lek survey in Moray and Nairn 2009 \(RSPB\)](#)  
[Black grouse lek survey in the Scottish Borders, 201 \(Southern Upland Partnership\)](#)  
[Black grouse lek survey in Sutherland 2008-9 \(RSPB\)](#)  
[Black grouse lek survey in Wester Ross and Skye 2009 \(RSPB\)](#)

[Terrestrial Heteroptera Recording Scheme \(Shieldbugs & allied species\)](#)  
[ispot \(2008-2010\): Shieldbugs & allied species](#)

[Thames Valley Environmental Records Centre](#)  
[Nature Conservancy Council Berkshire Meadows Survey 1984-87 \(as held by Thames Valley Environmental Records Centre\)](#)

<http://ukbars.defra.gov.uk/maps/Planning/Index>

Prototype mapping facility released April 2011

# Biodiversity Action Mapping

[Cymraeg](#) [English](#) [ [Log On](#) ]

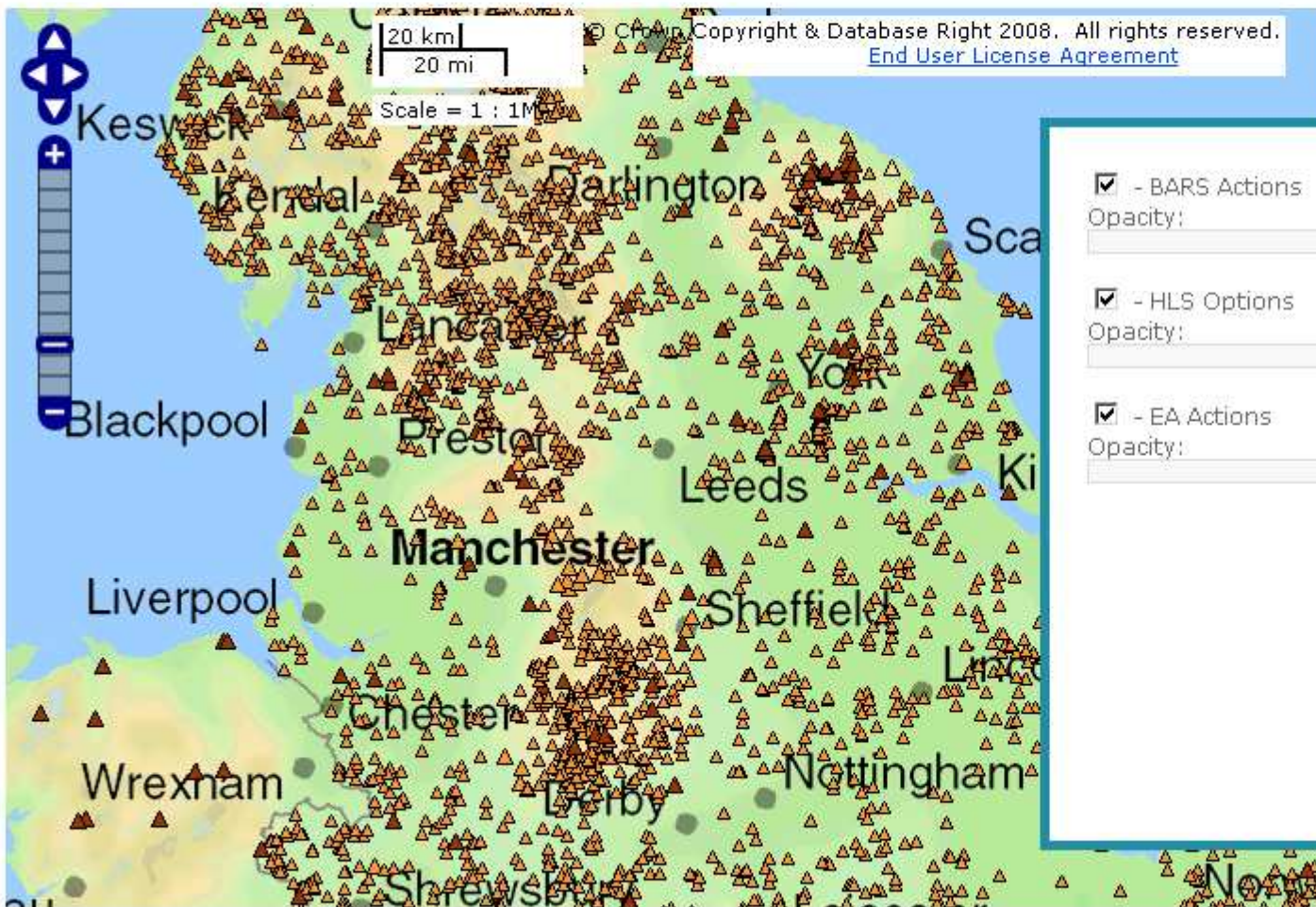
BARS Home

Introduction

Action Maps

Help

Feedback



**Legend**

- BARS Actions  
Opacity: [Slider]
- HLS Options  
Opacity: [Slider]
- EA Actions  
Opacity: [Slider]

**Layers**

- Actions
- Location
- Habitat / Species
- Type / Status
- Dates
- Boundaries

Activity Status	Colour
Not Started	[Orange Box]

<http://jncc.defra.gov.uk/page-5201>



# UK Marine Protected Areas Interactive Map

Home > UK MPAs > UK MPA Map

Welcome | Map Layers | Key | Search

- s2. Scanner Pockmark (cSAC/SCI)
- s3. Inner Dowsing, Race Bank and North Ridge
- s4. North Norfolk Sandbanks and Saturn Reef (cSAC/SCI)
- s5. Haisborough, Hammond and Winterton (cSAC/SCI)
- s6. Bassurelle Sandbank (cSAC)
- s7. Haig Fras (cSAC/SCI)
- s8. Stanton Banks (cSAC/SCI)
- s9. North West Rockall Bank (cSAC)
- s10. Darwin Mounds (cSAC/SCI)
- s11. Wyville Thomson Ridge (cSAC)

### Offshore pSACs

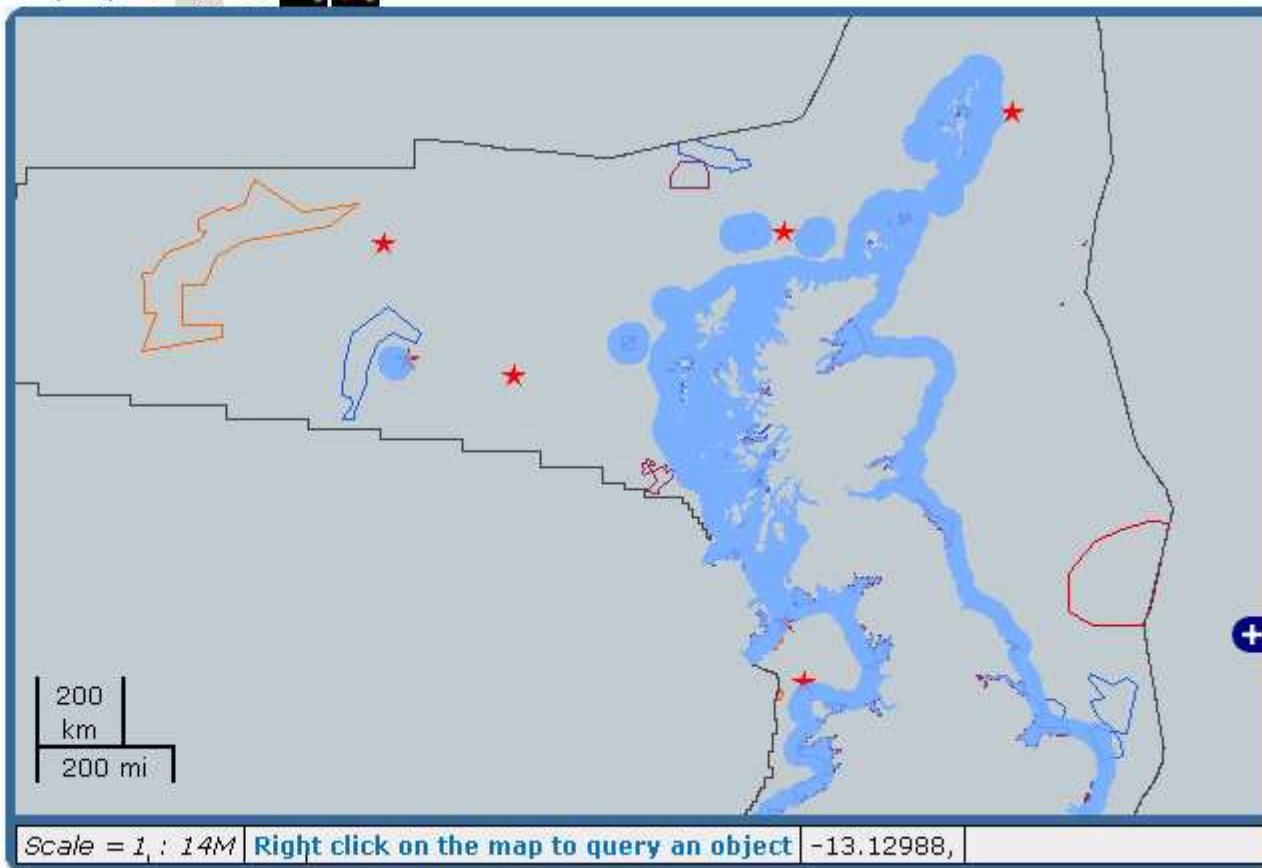
- p1. Dogger Bank (pSAC)

### Offshore dSACs

- d1. Hatton Bank (dSAC)
- d2. Pisces Reef Complex (dSAC)
- d3. White-Barfleur Reef (dSAC)
- d4. Wight-Barfleur Reef (dSAC)

### Offshore Areas Of Search

- (a) Solan Bank
- (b) Reef east of Shetland Isles
- (c) North west Anglesey Reef



<http://uknea.unep-wcmc.org/>

Due to report Summer 2011



Understanding nature's value to society

News

**Economic Analysis for Ecosystem Service Assessments, Oct 2010**

The first output of the UK NEA has recently been published online in the journal *Environmental and Resource Economics*. The paper, authored by a small team of economists and natural scientists working on the UK NEA, seeks to contribute to the expanding literature on ecosystem service assessment by considering its integration with economic analyses of such services... [click here](#) to view the full paper.

What is the UK National Ecosystem Assessment?

The UK National Ecosystem Assessment (UK NEA) is the first analysis of the UK's natural environment in terms of the benefits it provides to society and continuing economic prosperity. Part of the Living With Environmental Change (LWEC) initiative, the UK NEA - which commenced in mid-2009 - will be reporting in early 2011. It is an inclusive process involving many government, academic, NGO and private sector institutions.

Meetings

There are no further meetings planned.  
[Click here](#) to view the full list of past UK NEA Meetings.

**All UK NEA Communications are available to download.**



Thank you!

[Vicky.morgan@jncc.gov.uk](mailto:Vicky.morgan@jncc.gov.uk)